

Oh love, that rulest in our land

Selene

W S Gilbert

Edward German

Allegro moderato (appassionato)

f

3

3

3

Detailed description: This block contains the piano introduction. It features a treble and bass clef with a key signature of one sharp (F#) and a common time signature (C). The music is marked 'Allegro moderato (appassionato)' and 'f' (forte). The right hand has a melodic line with slurs and a triplet of eighth notes. The left hand has a bass line with slurs and triplets of eighth notes.

Selene *Moderato*

4

p

Oh love, that rul est in our land, Dread Aut o-crat of Good and Ill, What

p

Detailed description: This block contains the first line of the song. The vocal line is in a treble clef with a key signature of one sharp (F#) and a 3/4 time signature. It is marked 'Moderato' and 'p' (piano). The lyrics are 'Oh love, that rul est in our land, Dread Aut o-crat of Good and Ill, What'. The piano accompaniment is in a grand staff with a key signature of one sharp (F#) and a 3/4 time signature. It is marked 'p' (piano) and features chords and a bass line.

9

would'st thou in our fair-y band? What mis sion com est to ful - fil? _____ De

pp

accel.

Detailed description: This block contains the second line of the song. The vocal line is in a treble clef with a key signature of one sharp (F#) and a 3/4 time signature. It is marked 'pp' (pianissimo) and 'accel.' (accelerando). The lyrics are 'would'st thou in our fair-y band? What mis sion com est to ful - fil? _____ De'. The piano accompaniment is in a grand staff with a key signature of one sharp (F#) and a 3/4 time signature. It is marked 'pp' (pianissimo) and 'accel.' (accelerando) and features chords and a bass line.

14

clare _____ to me thy sov'-reign will, Thy sov' - reign will!

19

Art thou a nev-er - fail-ing source Of all the joy a heart can hold? —

23

Or tal-is-man that runs its course As min - i - ster of woes, Of woes un -

fp *accel.*

28 *rit.*

told. _____ Dread Au - to - crat of Good or Ill _____ De -

32 *accel.* *rit.*

clare to me thy sov' - reign will! De - clare to me De clare to me thy sov' - reign

36 *a tempo*

will! Oh,

Moderato

40

Eth - ais, thou art god - ly wise Un - tu-tored thou in shame ful art; No

44

treas on lurks in those brave eyes No false hood in that gal lant heart!

accel.

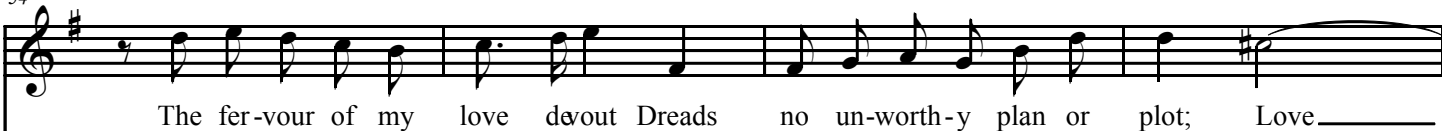
accel.

49

There treach - e - ry can take no part, Can take no part.

f *allargando* *colla voce.* *p*

54



54

pp

58



58

mf *sf p* *accel.*

63



63

allargando (appassionato)

67 *ff*

love thee, love thee and doubt thee not! I love thee, I love thee, and I

70

doubt, I doubt thee not!

ff